



# **FIBRE OPTICAL CONNECTIVITY & SOLUTIONS**


PRODUCT CATALOGUE 2018/19





## MENU NAVIGATION

ABOUT US	3
OUR COMPANY	4
OUR VISION	6
OUR TEST	8
MENU PRODUCTS	11



Twisted pair is a type of wiring in which two conductors are twisted together for the purposes of canceling out electromagnetic interference. One of the most important production process in order to meet the restricted performance required. Twisted-pair cabling was invented by Alexander Graham Bell in 1881.



## ABOUT US

Established in 1998, Afson Cable is a leading manufacturer of LAN cable with full manufacturing facilities in Hangzhou, serving customers in Asia, Europe, USA and Africa.

A full range of products is available including CAT5e, CAT6, CAT6A, CAT7 and CAT7A, Ethernet patching cable and Data Centre special cable ideal for computer networks and Data centres.

Our company also designs, develops, manufactures and sells a full range of Coaxial cable for TV, Satellite, Data application, Broadband Communication Networks and special cable for bespoke applications and requests from the market.

In addition Afson Cable has invested in the last 8 years in research and development of Fibre Optic solutions and this catalogue presents our latest contribution to our range including cabinets and racks.

Our company has both volume and fast response manufacturing capabilities making us able to support our customers globally with specific projects and fast service requests.

Afson Cable is specialised especially in designing and developing branded products for OEM customers.

## OUR COMPANY

AFSON CABLE & WIRE IS THE SUBSIDIARY COMPANY OF HANGZHOU AFSON ELECTRONICS CO. LTD. FOUNDED IN 1998, WE ARE NOW LEADERS IN THE FIELD OF COAXIAL AND LAN CABLES.

### STRATEGY

We provide a wide variety of specific products for TVs, satellites and broadband communication networks. Since our company started producing high quality cables, it never stopped improving its activity.

Our facilities are in Hangzhou, but our customers are all over the world: Asia, Europe, USA and Africa. In the last 8 years we have also invested in Fibre Optic solutions providing a complete package for a variety of applications.

### HIGH TECH CABLES

We specialise in producing high tech cables used in the networking infrastructure. Our daily objective is to provide the best service tailored to the needs of our customers from every corner of the world with fast service response to a variety of requests.

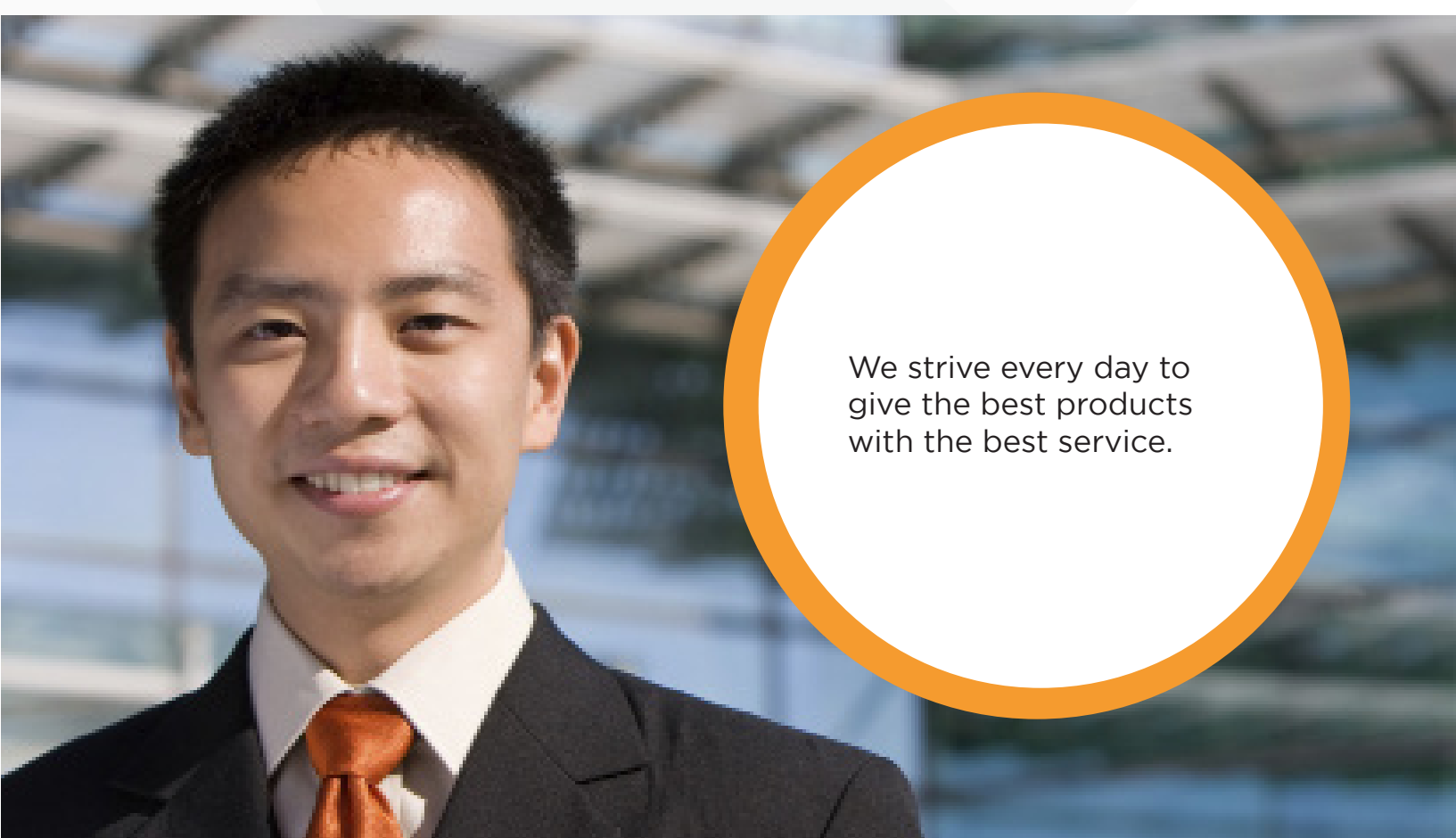
Our main products are LAN cables, patch cords and coaxial cables. We can supply Cat.5e, Cat.6, Cat.6A, Cat.7 and Cat.7A, Ethernet Patching Cables, Data Centre among the products on offer.

### SPECIAL CABLE

We are also professional in designing and developing branded products for OEM customers. Our big efforts are rewarded by the satisfaction of our customers, giving us a good reputation. We are known for two main qualities: stable, reliable products and reasonable prices. We take care of all the manufacturing process, from the first steps to the final user. Our aim is to provide excellent customer service.

## WE TAKE CARE OF ALL THE MANUFACTURING PROCESS

AFSON has become a high quality company because of its great team of designers, engineers, manufacturers and sellers. Every member of the company has a long time experience in the field of cables for the telecommunications market. We take care of all the manufacturing process, from the first steps to the final user: we pay a lot of attention in customer caring too.



We strive every day to  
give the best products  
with the best service.

## OUR VISION

We strive to develop and improve on current technologies, as we strongly believe that our cables create real connection between people.

We want our cables to be little perfect pieces of a bigger picture, connecting people for a better tomorrow. We believe in design and sustainable technology.

This attitude makes us proud of our company.

Our company can really make the difference: such a small object as a cable plays a key role in the network communication system.

Our objective is to develop and produce each components which together, harmoniously, make up a perfect solution.

We believe in design and technology that enhances human interaction





Several standard types of copper patch cord require several types of special cables and features, in order to meet the application requests, armoured, mini, flexy, among others.



## OUR TEST

TESTS MEASUREMENTS AT THE END OF EACH PRODUCTION LINE ARE CRUCIAL IN ORDER TO GUARANTEE THE QUALITY AND THE PERFORMANCE IN ACCORDANCE TO THE NATIONAL AND INTERNATIONAL PARAMETERS.

### TYPE TEST:

This type of test is conducted at the beginning of the production with the purpose to check and confirm the design specifications.

All other test such as aging , stress, torsion , crush, water penetration, tensile performance and bending test are performed on each unit after production.

### ROUTINE TEST:

This is a test which is conducted after each single production has the purpose to check and confirm the proper manufacturing of each and every unit. This is an essential test to be performed before dispatching the products on to the market.

### ELECTRICAL TEST:

This test measures the following: Resistance, impedance, capacitance, attenuation, velocity of propagation, in addition we also perform a transmission test which measures delay skew, return loss, cross talk, ACR (Attenuation to Crosstalk Ratio)




## MENU PRODUCTS

FIBRE MENU

---

13

---



In addition to the production and supply of standard cables from CAT5 to CAT7, Afson Cable and Wire can produce and design cables with special features such as hybrid cables for example coax and LAN or fibre optic and LAN, special type of jackets for critical environment and a full range of multi pairs LAN cable for each categories.

All our products come with a full test certificate and the packaging can be tailored to the customer's requests.

# LAN CABLE

THE INDISPUTABLE SOUL OF EACH CABLING STRUCTURED SYSTEM, IS THE CABLE.

Into each regulation scenario (harmonization rules) we can find different types of cable in order to satisfy different types of performances and environment conditions. Afson cable & wire provides a full range of OEM LAN cable from cat5e to cat7.

Available Shielded and Unshielded; for indoor (LSZH, PVC version) and outdoor use (HDPE or PVC version); Standard and Mini outer diameter.

Our cable from cat5e to cat7 are used from residential and commercial building to high performance Data Centre, where is required high density solutions and augmented data range. Our cable can meet UL specifications and the new CPR (construction product rules) specifications

# FIBRE MENU

PATCH CORD SIMPLEX SUPREME	14
PATCH CORD DUPLEX SUPREME	16
PIGTAIL TIGHT BUFFER SINGLEMODE	18
PIGTAIL TIGHT BUFFER MULTIMODE	20
PIGTAIL SEMI LOOSE SINGLEMODE	22
PIGTAIL SEMI LOOSE MULTIMODE	24
PATCH CORD DUPLEX REVERSIBLE POLES	26
PATCH CORD SIMPLEX SUPREME RSB	28
PATCH CORD DUPLEX SUPREME RSB	30
PATCH CORD SIMPLEX ARMoured	32
PATCH CORD DUPLEX ARMoured	34
CONNECTORS SINGLEMODE	36
CONNECTORS MULTIMODE	38



# FIBRE MENU

FAST CONNECTORS	40
ADAPTORS SINGLEMODE	42
ADAPTORS MULTIMODE	44
PATCH CORD SIMPLEX STANDARD	46
PATCH CORD DUPLEX STANDARD	48
PIGTAIL STANDARD LINE	50
OPT PATCH PANEL SC SIMPLEX - LC DUPLEX	52
OPT PATCH PANEL FLEXY PANEL	54
OPT PATCH PANEL	56
FTTX PRETERM	60
WALL BOX	62
SPLITTER	65
PATCH CORDS FTTH	66



# PATCH CORD SIMPLEX



## GENERAL

Our Supreme line differs from our standard line in the properties of the fibre used. This type of fibre is a Corning fibre with a Kevlar as a strengthening member. We produce a vast range of simplex fibre optic patch cords in [OS1/2 9/125](#) - [OM1 62.5/125](#) - [OM2 50/125](#) - [OM3 50/125](#) and [OM4 50/125](#) with a Fast Line facility for quick delivery. Various lengths and connector types are available to meet individual requirements.



## FEATURES

- SC, LC and ST connectors as standard. Other connectors available.
- UPC polished connectors.
- APC polished available for singlemode.
- 2mm 900mm LSZH (low smoke zero halogen) tight buffer cable as standard, 3mm available on request. Corning fibre – Kevlar strengthening member.
- Armoured also available.
- Short boot also available.
- Each patch cord is tested and supplied with a full test certificate.

### **Standard colours:**

- OS2 yellow
- OM1 and OM2 orange
- OM3 Aqua - OM4 Erika Violet or Aqua or request
- Other colours available upon request.



## STANDARD

- Our fibre conforms to or exceeds all relevant ISO/IEC, TIA/EIA and ITU standards.



## PACKAGING

- Sealed plastic bag with individual test certificate as standard.
- Zip lock bags and blister packaging also available.





## PART NUMBER GENERATOR

Connector A	Connector B	Type of fibre	Simplex SX	Length
SC	SC	OM1	SX	0.5
SCA	SCA	OM2	SX	1
LC	LC	OM3	SX	2
LCA	LCA	OM4	SX	3
ST	ST	OS2	SX	5
FC	FC	-	SX	10
FCA	FCA	-	SX	15
E2	E2	-	SX	20
E2A	E2A	-	SX	30
MU	MU	-	-	-

Example part number

SC	SC	OS2	SX	5
----	----	-----	----	---

Description :

Patch cord simplex supreme line 2mm cable SC-SC single mode (SM) yellow 5 metres length.



# PATCH CORD DUPLEX



## GENERAL

Our Supreme line differs from our standard line in the properties of the fibre used. This type of fibre is a Corning fibre with a Kevlar as a strengthening member. We produce a vast range of duplex fibre optic patch cords in [OS1/2 9/125 -OM1 62.5/125-OM2 50/125-OM3 50/125](#) and [OM4 50/125](#) with a Fast Line facility for quick delivery.

Various lengths and connector types are available to meet individual requirements.



## FEATURES

- SC, LC and ST connectors as standard. Other connectors available.
- UPC polished connectors.
- APC polished available for singlemode.
- 2mm LSZH (low smoke zero halogen) tight buffer cable as standard, 3mm available on request.
- Corning fibre – Kevlar strengthening member.
- Armoured also available.
- Short boot also available.
- Each patch cord is tested and supplied with a full test certificate.

### **Standard colours:**

- OS2 yellow
- OM1 and OM2 orange
- OM3 Aqua - OM4 Erika Violet or Aqua or request
- Other colours available upon request.



## STANDARD

- Our fibre conforms to or exceeds all relevant ISO/IEC, TIA/EIA and ITU standards.



## PACKAGING

- Sealed plastic bag with individual test certificate as standard.
- Zip lock bags and blister packaging also available.





## PART NUMBER GENERATOR

Connector A	Connector B	Fibre type	Fibre configuration	Length
SC	SC	OM1	DX	0.5
SCA	SCA	OM2	DX	1
LC	LC	OM3	DX	2
LCA	LCA	OM4	DX	3
ST	ST	OS2	DX	5
FC	FC	-	DX	10
FCA	FCA	-	DX	15
E2	E2	-	DX	20
E2A	E2A	-	DX	30
MU	MU	-	-	-

Example part number

SC	SC	OS2	DX	5
----	----	-----	----	---

Description :

Patch cord duplex supreme line 2mm cable SC-SC single mode (SM) yellow 5 metres length.



# PIGTAIL TIGHT BUFFER *Singlemode*



## GENERAL

Our supreme line range of single mode pigtails are suitable for telecom, datacom, data centre and some critical applications. The pigtails are manufactured with 900mm buffered fibre easily handled in fibre management application such as panels, splice cassettes and wall boxes.

Only physical contact and angled physical contact zirconia ferrule connectors are used for precision factory mounting and polishing techniques which helps assure high transmission quality.

Available in SC LC ST FC and E2000



## FEATURES

- Exceed IEC performance requirements
- Provided in individual packaging
- Tight buffer low smoke zero halogen (LSZH) material with 900 micron diameter
- REACH & SvHC compliant
- Materials compliant to RoHS2
- Operating temperature -20C to +60C
- Nominal diameter 900 um + - 50 um



## SPECIFICATION

- Attenuation dB/km 3.0 at 850 nm/ 0.8 at 1300 nm
- Bandwidth OFL (MHz x km ) 200.0 at 850 nm/ 500 at 1300nm



## PACKAGING

- Sealed plastic bag with individual test certificate as standard.
- Zip lock bags and blister packaging also available.





P/N	DESCRIPTION
OS2 SIMPLEX SINGLEMODE TIGHT BUFFER	
E2AOS2T1	E2A SUPREME Simplex SM 900um LSZH TB
FCAOS2T1	FCA SUPREME Simplex SM 900um LSZH TB
LCAOS2T1	LCA SUPREME Simplex SM 900um LSZH TB
SCAOS2T1	SCA SUPREME Simplex SM 900um LSZH TB
FCOS2T1	FC SUPREME Simplex SM 900um LSZH TB
LCOS2T1	LC SUPREME Simplex SM 900um LSZH TB
SCOS2T1	SC SUPREME Simplex SM 900um LSZH TB
STOS2T1	ST SUPREME Simplex SM 900um LSZH TB
G657A1-A2 SIMPLEX SINGLEMODE TIGHT BUFFER	
E2ABOS2T1	E2A SUPREME Simplex G.657A2 900um LSZH TB
FCABOS2T1	FCA SUPREME Simplex G.657A2 900um LSZH TB
LCABOS2T1	LCA SUPREME Simplex G.657A2 900um LSZH TB
SCABOS2T1	SCA SUPREME Simplex G.657A2 900um LSZH TB
E2BOS2T1	E2 SUPREME Simplex G.657A2 900um LSZH TB
FCBOS2T1	FC SUPREME Simplex G.657A2 900um LSZH TB
LCBOS2T1	LC SUPREME Simplex G.657A2 900um LSZH TB
SCBOS2T1	SC SUPREME Simplex G.657A2 900um LSZH TB
STBOS2T1	ST SUPREME Simplex G.657A2 900um LSZH TB

# PIGTAIL TIGHT BUFFER *Multimode*



## GENERAL

Our supreme line range of multimode pigtails are suitable for telecom, datacom, data centre and some critical applications. The pigtails are manufactured with 900mm buffered fibre easily handled in fibre management application such as panels, splice cassettes and wall boxes.

Only physical contact and angled physical contact zirconia ferrule connectors are used for precision factory mounting and polishing techniques which helps assure high transmission quality.

Available in SC LC ST FC and E2000



## FEATURES

- Exceed IEC performance requirements
- Provided in individual packaging
- Tight buffer low smoke zero halogen (LSZH) material with 900 micron diameter
- REACH & SvHC compliant
- Materials compliant to RoHS2
- Operating temperature -20C to +60C
- Nominal diameter 900 um + - 50 um



## SPECIFICATION

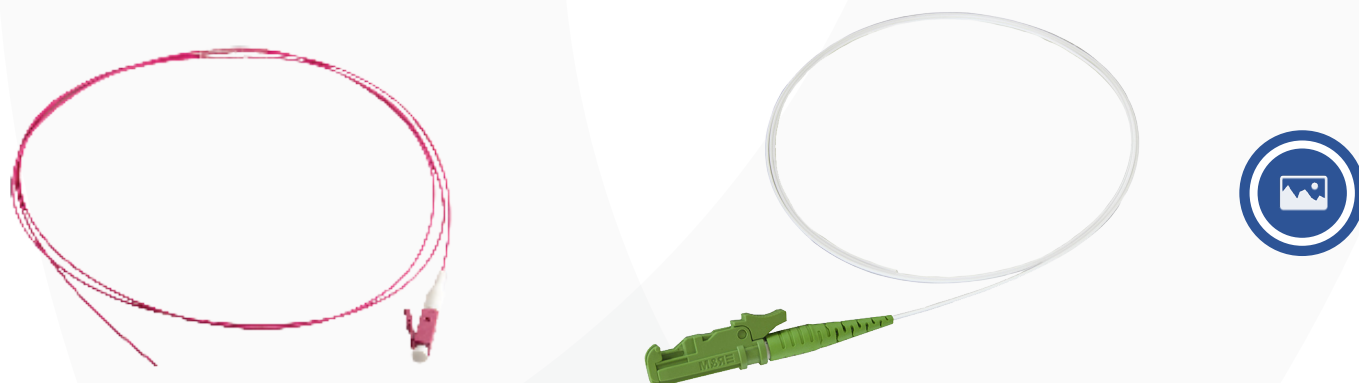
- Attenuation dB/km 3.0 at 850 nm/ 0.8 at 1300 nm
- Bandwidth OFL (MHz x km ) 200.0 at 850 nm/ 500 at 1300nm



## PACKAGING

- Sealed plastic bag with individual test certificate as standard.
- Zip lock bags and blister packaging also available.





P/N	DESCRIPTION
OM1 SIMPLEX MULTIMODE TIGHT BUFFER	
E2OM1T1	E2 SUPREME Simplex OM1 900um LSZH TB
FCOM1T1	FC SUPREME Simplex OM1 900um LSZH TB
LCOM1T1	LC SUPREME Simplex OM1 900um LSZH TB
SCOM1T1	SC SUPREME Simplex OM1 900um LSZH TB
STOM1T1	ST SUPREME Simplex OM1 900um LSZH TB
OM2 SIMPLEX MULTIMODE TIGHT BUFFER	
E2OM2T1	E2 SUPREME Simplex OM2 900um LSZH TB
FCOM2T1	FC SUPREME Simplex OM2 900um LSZH TB
LCOM2T1	LC SUPREME Simplex OM2 900um LSZH TB
SCOM2T1	SC SUPREME Simplex OM2 900um LSZH TB
STOM2T1	ST SUPREME Simplex OM2 900um LSZH TB
OM3 SIMPLEX MULTIMODE TIGHT BUFFER	
E2OM3T1	E2 SUPREME Simplex OM3 900um LSZH TB
FCOM3T1	FC SUPREME Simplex OM3 900um LSZH TB
LCOM3T1	LC SUPREME Simplex OM3 900um LSZH TB
SCOM3T1	SC SUPREME Simplex OM3 900um LSZH TB
STOM3T1	ST SUPREME Simplex OM3 900um LSZH TB
OM4 SIMPLEX MULTIMODE TIGHT BUFFER	
E2OM4T1	E2 SUPREME Simplex OM4 900um LSZH TB
FCOM4T1	FC SUPREME Simplex OM4 900um LSZH TB
LCOM4T1	LC SUPREME Simplex OM4 900um LSZH TB
SCOM4T1	SC SUPREME Simplex OM4 900um LSZH TB
STOM4T1	ST SUPREME Simplex OM4 900um LSZH TB

# PIGTAIL SEMI LOOSE *Singlemode*



## GENERAL

Pigtails are used in a wide range of communication networks. Our semi loose buffer Supreme Line pigtail can be used in fusion splicers, but can be easily stripped to longer lengths than tight buffer pigtails.



## FEATURES

- Easily stripped 900 Qm buffer can be stripped up to 100 mm
- Singlemode Fibre conforms to ITU-G651.1, TIA/EIA 492AAA
- Suitable for splicing
- SC, LC, ST and FC connectors available
- Low smoke zero halogen (LSZH) secondary buffer
- REACH, RoHS & SvHC materials compliant
- Telecom and datacom application
- Suitable for Patch panels, wall boxes, ODFs and splice cassettes
- Easy to strip for on site installation
- ATM, SONET and WDM



## SPECIFICATION

- Attenuation dB/km 3.0 at 850 nm/ 0.8 at 1300 nm
- Bandwidth OFL (MHz x km ) 200.0 at 850 nm/ 500 at 1300nm

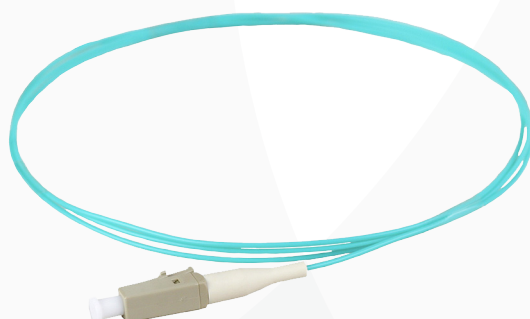


## PACKAGING

- Sealed plastic bag with individual test certificate as standard.
- Zip lock bags and blister packaging also available.







P/N	DESCRIPTION
OS2 SIMPLEX SINGLEMODE SEMI LOOSE	
E2AOS2T1	E2A Simplex SM 900um LSZH Semi Loose
FCAOS2T1	FCA Simplex SM 900um LSZH Semi Loose
LCAOS2T1	LCA Simplex SM 900um LSZH Semi Loose
SCAOS2T1	SCA Simplex SM 900um LSZH Semi Loose
FCOS2T1	FC Simplex SM 900um LSZH Semi Loose
LCOS2T1	LC Simplex SM 900um LSZH Semi Loose
SCOS2T1	SC Simplex SM 900um LSZH Semi Loose
STOS2T1	ST Simplex SM 900um LSZH Semi Loose
G657A1-A2 SIMPLEX SINGLEMODE SEMI LOOSE	
E2ABOS2T1	E2A Simplex G.657A2 900um LSZH Semi Loose
FCABOS2T1	FCA Simplex G.657A2 900um LSZH Semi Loose
LCABOS2T1	LCA Simplex G.657A2 900um LSZH Semi Loose
SCABOS2T1	SCA Simplex G.657A2 900um LSZH Semi Loose
E2BOS2T1	E2 Simplex G.657A2 900um LSZH Semi Loose
FCBOS2T1	FC Simplex G.657A2 900um LSZH Semi Loose
LCBOS2T1	LC Simplex G.657A2 900um LSZH Semi Loose
SCBOS2T1	SC Simplex G.657A2 900um LSZH Semi Loose
STBOS2T1	ST Simplex G.657A2 900um LSZH Semi Loose

# PIGTAIL SEMI LOOSE *Multimode*



## GENERAL

Pigtails are used in a wide range of communication networks. Our semi loose buffer Supreme Line pigtail can be used in fusion splicers, but can be easily stripped to longer lengths than tight buffer pigtails.



## FEATURES

- Easily stripped 900 Qm buffer can be stripped up to 100 mm
- Multimode fibre conforms to ITU-G651.1, TIA/EIA 492AAA
- Suitable for splicing
- SC, LC, ST and FC connectors available
- Low smoke zero halogen (LSZH) secondary buffer
- REACH, RoHS & SvHC materials compliant
- Telecom and datacom application
- Suitable for Patch panels, wall boxes, ODFs and splice cassettes
- Easy to strip for on site installation
- ATM, SONET and WDM



## SPECIFICATION

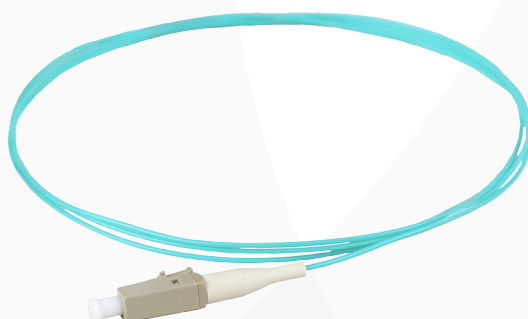
- Attenuation dB/km 3.0 at 850 nm/ 0.8 at 1300 nm
- Bandwidth OFL (MHz x km ) 200.0 at 850 nm/ 500 at 1300nm



## PACKAGING

- Sealed plastic bag with individual test certificate as standard.
- Zip lock bags and blister packaging also available.





P/N	DESCRIPTION
OM1 SIMPLEX MULTIMODE SEMI LOOSE	
E2OM1T1	E2 Simplex OM1 900um LSZH Semi Loose
FCOM1T1	FC Simplex OM1 900um LSZH Semi Loose
LCOM1T1	LC Simplex OM1 900um LSZH Semi Loose
SCOM1T1	SC Simplex OM1 900um LSZH Semi Loose
STOM1T1	ST Simplex OM1 900um LSZH Semi Loose
OM2 SIMPLEX MULTIMODE SEMI LOOSE	
E2OM2T1	E2 Simplex OM2 900um LSZH Semi Loose
FCOM2T1	FC Simplex OM2 900um LSZH Semi Loose
LCOM2T1	LC Simplex OM2 900um LSZH Semi Loose
SCOM2T1	SC Simplex OM2 900um LSZH Semi Loose
STOM2T1	ST Simplex OM2 900um LSZH Semi Loose
OM3 SIMPLEX MULTIMODE SEMI LOOSE	
E2OM3T1	E2 Simplex OM3 900um LSZH Semi Loose
FCOM3T1	FC Simplex OM3 900um LSZH Semi Loose
LCOM3T1	LC Simplex OM3 900um LSZH Semi Loose
SCOM3T1	SC Simplex OM3 900um LSZH Semi Loose
STOM3T1	ST Simplex OM3 900um LSZH Semi Loose
OM4 SIMPLEX MULTIMODE SEMI LOOSE	
E2OM4T1	E2 Simplex OM4 900um LSZH Semi Loose
FCOM4T1	FC Simplex OM4 900um LSZH Semi Loose
LCOM4T1	LC Simplex OM4 900um LSZH Semi Loose
SCOM4T1	SC Simplex OM4 900um LSZH Semi Loose
STOM4T1	ST Simplex OM4 900um LSZH Semi Loose

# PATCH CORD DUPLEX - REVERSIBLE POLES



## GENERAL

The advantage of an LC integrated boot reversible polarity connector is that the polarity can be easily changed without any tools. The connectors have colour coded pins to allow easily recognised polarity.



## FEATURES

Available in OM3, OM4 and O52and G657 A1 A2 LSZH 2mm Corning fibre Cable – 100% individually tested each patch cord is supplied with full test certificate .

### **Standard colours:**

- OS2 yellow
- OM1 and OM2 orange
- OM3 Aqua - OM4 Erika Violet or Aqua or request
- Other colours available upon request.



## SPECIFICATIONS

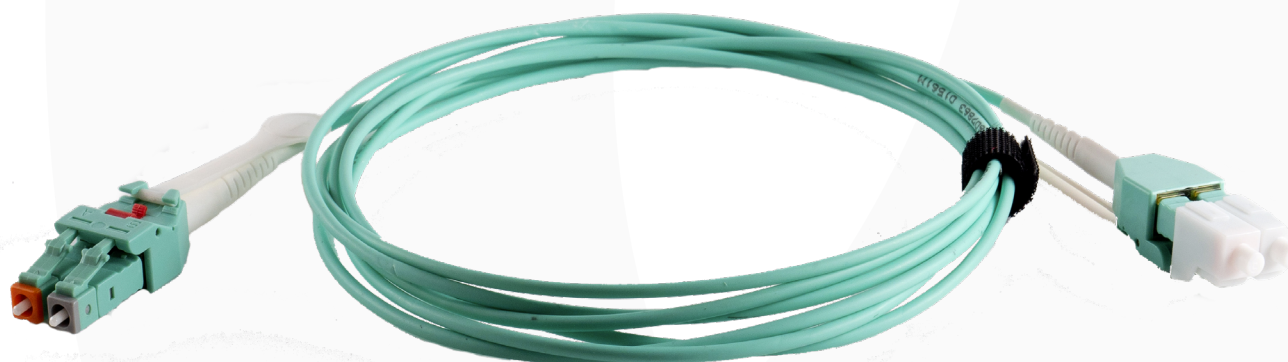
- Excellent solution for a smooth connectivity with guaranteed great performance. Suitable for field installation and high density Data Centres
  - Environmentally safe – complies with UL94-V-0, IEC 60332-3, IEC 60754-2, IEC 61034 and RoHS.
- Benefits: > Allows quick Moves Adds & Change.



## PACKAGING

- Sealed plastic bag with individual test certificate as standard.
- Zip lock bags and blister packaging also available.





## PART NUMBER GENERATOR

Connector A	Connector B	Stand	G657A2	Type of fibre	Duplex	Length
LC	LC	PO	PB	OM3	DX	0.5
LC	LC	PO	PB	OM4	DX	1
LC	LC	PO	PB	OS2	DX	2
-	-	-	-	-	-	XX

Example part number

**LCLCPOS2DX1**

LC	LC	PO	OS2	DX	1
----	----	----	-----	----	---

Description :

**Supreme** OS2 LC - LC Duplex 9/125 2mm LSZH Yellow reversible poles 1mt.

# PATCH CORD SIMPLEX *RBS line*



## GENERAL

Our RBS line is a range of short boot patch cord ideal for high-density application with limited space requirements. The connector length for example for an LC patch cord from tip to boot is only 40mm instead of the usual 66 mm providing 40% more space. These patch cords are supplied with reduced bend sensitivity fibre, which is an added advantage as it reduces optical power loss when in bending condition.



## FEATURES

- Our patch cords are designed to meet IEC, EN or Telcordia GR 326 specifications.
- They are available simplex and duplex in our Supreme line range with Corning Fibre and Kevlar strengthening member.
- Single mode available in G657A1 and G657A2 colour yellow other colours available.
- SC, LC connectors as standard other connectors available upon request.
- 2mm LSZH connectors tight buffer cable as stat.
- 3mm available OM request.

### **Standard colours:**

- OS2 yellow
- OM1 and OM2 orange
- OM3 Aqua - OM4 Erika Violet or Aqua or request
- Other colours available upon request.



## SPECIFICATIONS

- Cable material LSZH
- Strength member: Kevlar
- Crush resistance (N): 1000
- Operating temperature: -20 to 60 degree centigrade
- Fire specification: IEC 60332-1

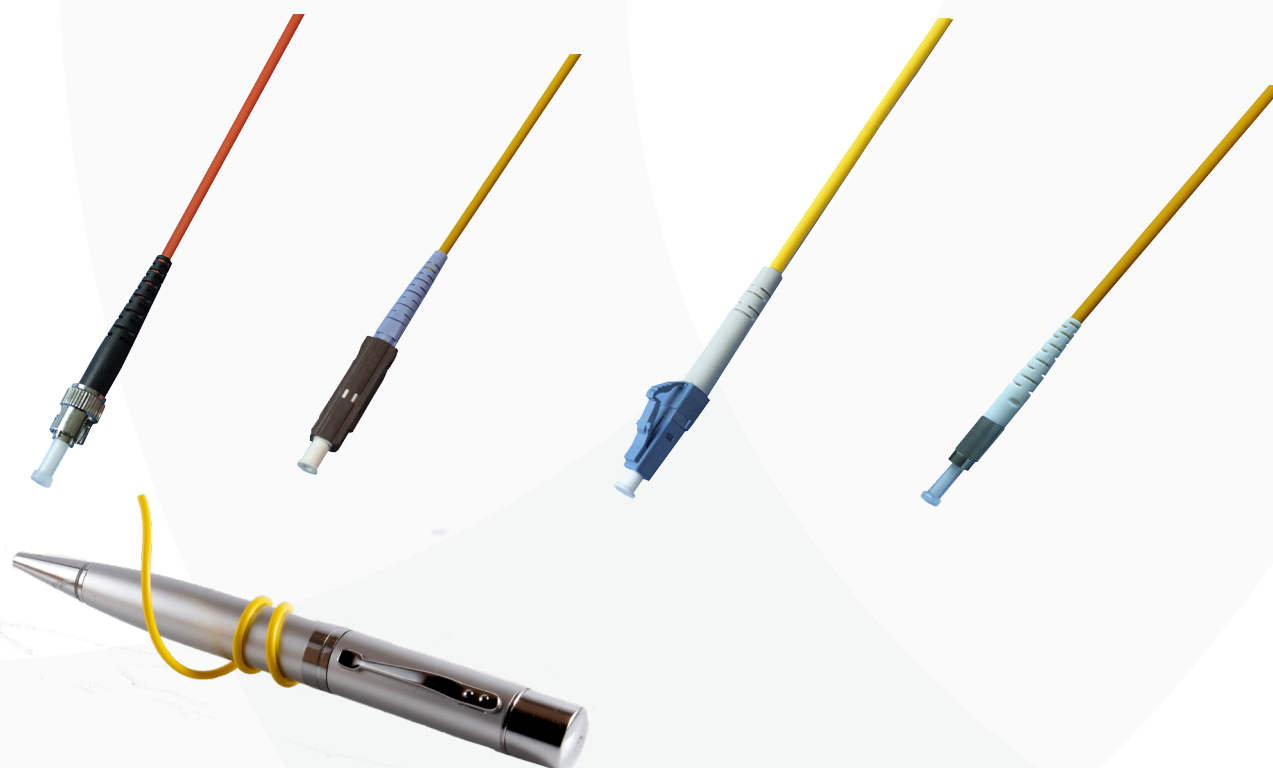


## PACKAGING

- Sealed plastic bag with full test certificate and serial number enabling identification.
- Zip lock bags and blister packaging also available.







## PART NUMBER GENERATOR

Connector A	Connector B	G57.A1	G57.A2	Fibre configuration	Length
SC	SC	A1	A2	SX	0.5
SCA	SCA	A1	A2	SX	1
Connector A	Connector B	UM3	UM4	Fibre configuration	Length
LC	LC	R3	R4	SX	2
LCA	LCA	R3	R4	SX	3
ST	ST	R3	R4	SX	5
FC	FC	R3	R4	SX	10
FCA	FCA	R3	R4	SX	15
E2	E2	R3	R4	SX	20
E2A	E2A	R3	R4	SX	30
MU	MU	R3	R4	SX	-

# PATCH CORD DUPLEX *RBS line*



## GENERAL

Our RBS line is a range of short boot patch cord ideal for high-density application with limited space requirements. The connector length for example for an LC patch cord from tip to boot is only 40mm instead of the usual 66 mm providing 40% more space. These patch cords are supplied with reduced bend sensitivity fibre, which is an added advantage as it reduces optical power loss when in bending condition.



## FEATURES

- Our patch cords are designed to meet IEC, EN or Telcordia GR 326 specifications.
- They are available simplex and duplex in our Supreme line range with Corning Fibre and Kevlar strengthening member.
- Single mode available in G657A1 and G657A2 colour yellow other colours available.
- SC, LC connectors as standard other connectors available upon request.
- 2mm LSZH connectors tight buffer cable as stat.
- 3mm available OM request.

### **Standard colours:**

- OS2 yellow
- OM1 and OM2 orange
- OM3 Aqua - OM4 Erika Violet or Aqua or request
- Other colours available upon request.



## SPECIFICATIONS

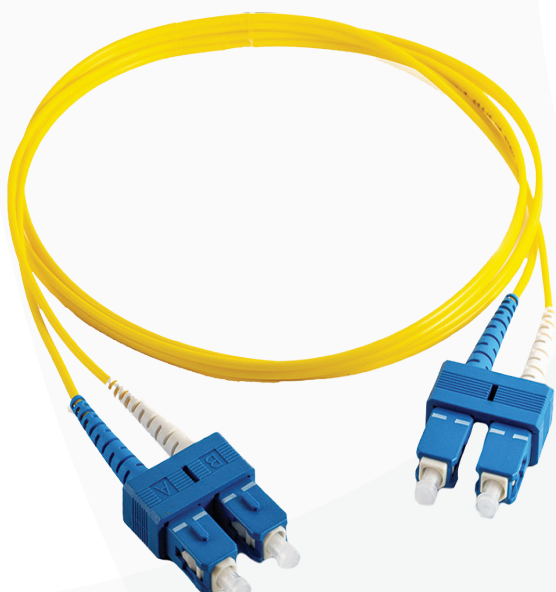
- Cable material LSZH
- Strength member: Kevlar
- Crush resistance (N): 1000
- Operating temperature: -20 to 60 degree centigrade
- Fire specification: IEC 60332-1



## PACKAGING

- Sealed plastic bag with full test certificate and serial number enabling identification.
- Zip lock bags and blister packaging also available.





## PART NUMBER GENERATOR

Connector A	Connector B	G57.A1	G57.A2	Fibre configuration	Length
SC	SC	A1	A2	SX	0.5
SCA	SCA	A1	A2	SX	1
Connector A	Connector B	UM3	UM4	Fibre configuration	Length
LC	LC	R3	R4	SX	2
LCA	LCA	R3	R4	SX	3
ST	ST	R3	R4	SX	5
FC	FC	R3	R4	SX	10
FCA	FCA	R3	R4	SX	15
E2	E2	R3	R4	SX	20
E2A	E2A	R3	R4	SX	30
MU	MU	R3	R4	SX	-



# PATCH CORD SIMPLEX **ARMOURED** line



## GENERAL

Our armoured patch cords are ideal for applications in particularly harsh indoor environments. These patch cords can be used to connect active and passive optical equipment. Constructed with stainless steel tape over 900mm tight buffer fibre plus a layer of aramid yarn and stainless steel mesh protected by an outer jacket in LSZH. Available with our range of connectors fully tested and guaranteed to meet international standards.



## FEATURES

- SC, LC, ST and FC connectors UPC and APC
- Available in low smoke zero halogen (LSZH) jacket
- Conforms to IEC, EIA-TIA or Telcordia performance requirements
- Available in different fibre types
- Available in standard and custom lengths
- REACH, SvHC and RoHS materials compliant

### **Standard colours:**

- White
- 3mm LSZH standard



## APPLICATIONS

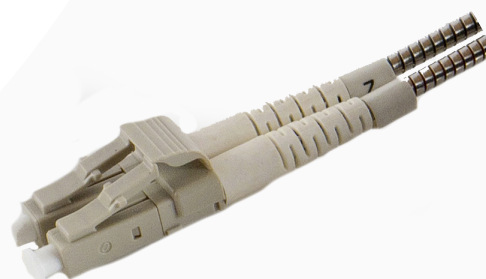
- CATV / VIDEO
- Passive Optical Network PON
- FTTX
- ATM, SONET and WDM
- Military applications
- Specifications
- Fibre specification
- Cable material LSZH
- Strength member ARAMID
- Crush (n) short term 3000
- Crush (n) long term 200
- Operating temperature (°c) -20 to 60
- Fire specification IEC 60332-1 IEC 60332-1



## PACKAGING

- Sealed plastic bag with individual test certificate as standard.
- Zip lock bags and blister packaging also available.





## PART NUMBER GENERATOR

Standard	Connector A	Connector B	Type of fibre	Simplex SX	Length
R	SC	SC	OM1	SX	0.5
R	SCA	SCA	OM2	SX	1
R	LC	LC	OM3	SX	2
R	LCA	LCA	OM4	SX	3
R	ST	ST	OS2	SX	5
R	FC	FC	-	SX	10
R	FCA	FCA	-	SX	15
R	E2	E2	-	SX	20
R	E2A	E2A	-	SX	30
R	MU	MU	-	SX	-

Example part number

R	SC	SC	OS2	SX	5
---	----	----	-----	----	---

Description :

Patch cord simplex armoured SC-SC single mode (SM) yellow 5 metres length.

# PATCH CORD DUPLEX **ARMOURED** line



## GENERAL

Our armoured patch cords are ideal for applications in particularly harsh indoor environments. These patch cords can be used to connect active and passive optical equipment. Constructed with stainless steel tape over 900mm tight buffer fibre plus a layer of aramid yarn and stainless steel mesh protected by an outer jacket in LSZH. Available with our range of connectors fully tested and guaranteed to meet international standards.



## FEATURES

- SC, LC, ST and FC connectors UPC and APC
- Available in low smoke zero halogen (LSZH) jacket
- Conforms to IEC, EIA-TIA or Telcordia performance requirements
- Available in different fibre types
- Available in standard and custom lengths
- REACH, SvHC and RoHS materials compliant

### **Standard colours:**

- White
- 3mm LSZH standard



## APPLICATIONS

- CATV / VIDEO
- Passive Optical Network PON
- FTTX
- ATM, SONET and WDM
- Military applications
- Specifications
- Fibre specification
- Cable material LSZH
- Strength member ARAMID
- Crush (n) short term 3000
- Crush (n) long term 200
- Operating temperature (°c) -20 to 60
- Fire specification IEC 60332-1 IEC 60332-1

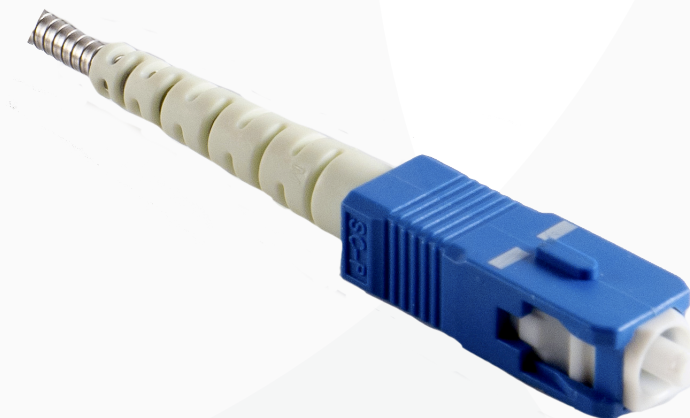


## PACKAGING

- Sealed plastic bag with individual test certificate as standard.
- Zip lock bags and blister packaging also available.







## PART NUMBER GENERATOR

Standard	Connector A	Connector B	Type of fibre	Simplex DX	Length
R	SC	SC	OM1	DX	0.5
R	SCA	SCA	OM2	DX	1
R	LC	LC	OM3	DX	2
R	LCA	LCA	OM4	DX	3
R	ST	ST	OS2	DX	5
R	FC	FC	-	DX	10
R	FCA	FCA	-	DX	15
R	E2	E2	-	DX	20
R	E2A	E2A	-	DX	30
R	MU	MU	-	DX	-

Example part number

R	SC	SC	OS2	DX	5
---	----	----	-----	----	---

Description :

Patch cord duplex armoured SC-SC single mode (SM) yellow 5 metres length.

# CONNECTORS *Singlemode*



## GENERAL

Our connectors are suitable for OM1, OM2, OM3, OM4, OS1 and OS2 and G657-A1 and A2 pig tails and patch cords, available in UPC and APC for single mode with a variety of colour and type of boots and cable diameter 900um, 2mm and 3mm for both single and multimode fibre. Manufactured including Standard, Premium Low Loss and High Performance Grades, which are suitable for various applications.



## FEATURES

### SC CONNECTOR:

- 2.5mm Zirconia Ceramic ferrule
- Push/pull fast connection mechanism
- UPC single mode with blue boots and housing
- APC single mode with green boots and housing - pre angled ferrule for 8 degree polishing
- Multimode with red or black boots and beige housing
- Complies with IEC 61754-4 and TIA 604-3-B, FOCIS-3
- Low insertion loss and back reflection capability
- Zirconia ceramic ferrule available in several performance grades
- RoHS materials, REACH SvHC compliant
- Each connector is packed individually and delivered in bulk package

### LC CONNECTOR:

- 1.25mm Zirconia Ceramic ferrule in a small form factor (SFF) fibre optic
- Snag free latch connection housing with an audible click
- UPC single mode with white or blue boots
- APC single mode with green boots
- Multimode with white, red or black boots available
- Complies with IEC 61754-20 and TIA 604-10-B, FOCIS-10 for intermateability
- Low insertion loss and back reflection capability
- Zirconia ceramic ferrule available in several performance grades
- RoHS materials, REACH SvHC compliant
- Each connector is packed individually and delivered in bulk package

### ST CONNECTORS

- 2.5 mm ferrule
- Quick release bayonet mechanism for ease of use.
- Low Loss and High Performance Grades suitable for various applications.
- Single mode with yellow boots
- Multimode with black or red boots
- Complies with IEC 61754-2 and TIA 604-2-B, FOCIS-2
- Nickel plated metal body
- Zirconia ceramic ferrule available in several performance grades
- RoHS materials, REACH SvHC compliant
- Each connector is packed individually and delivered in bulk package

### FC CONNECTORS

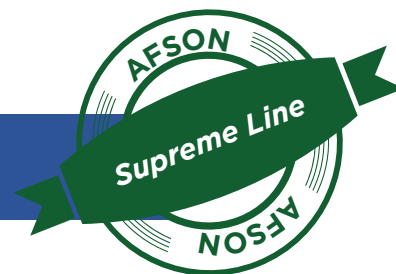
- 2.5 mm ferrule
- Threaded metal coupling nut for a secure connection
- UPC Single mode with blue boots
- APC with green boots
- Multimode with black boots
- Complies with IEC 61754-13 and TIA 604-4-B, FOCIS-4 for intermateability
- Low insertion loss and back reflection capability
- Precision anti rotation key for mechanical stability
- Nickel plated metal body corrosion resistant
- Zirconia ceramic ferrule available in several performance grades
- RoHS materials, REACH SvHC compliant
- Each connector is packed individually and delivered in bulk package





P/N	DESCRIPTION
FC SINGLEMODE	
FC09SX3	FC/PC Singlemode Connector 3mm Blue Boot 126um SIMPLEX
FCA09SX3	FC/APC 8-degree pre-angle Connector Green for 3mm SIMPLEX
FC09SX2	FC/PC Singlemode Connector 2mm Blue Boot 126um SIMPLEX
SC SINGLEMODE	
SC09SX3	SC SM Connector 3mm Blue Boot SIMPLEX
SC09SX2	SC SM Connector 2mm Blue Boot SIMPLEX
SCA09SX3	SC/APC 8-degree pre-angle Connector Green for 3mm Boot SIMPLEX
SC09DX3	SC SM Connector 3mm Blue Boot DUPLEX
SCA09DX3	SC/APC 8-degree Green for 3mm Boot DUPLEX
SC09DXB2	SC SM Connector 2mm Blue Bellcore Boot DUPLEX
ST SINGLEMODE	
ST09SX3	ST SM Connector 3mm Yellow Ribbed Boot SIMPLEX
ST09SX2	ST SM Connector 2mm Yellow Ribbed Boot 126um SIMPLEX
LC SINGLEMODE	
LC09SX2	LC SM Connector 2mm SIMPLEX
LC09SX3	LC SM Connector 126um BLUE BOOT for 3mm SIMPLEX
LCA09SX2	LC/APC SM Connector 2mm Green SIMPLEX
LC09DX2	LC SM Connector 2mm DUPLEX
LC09DX3	LC SM Connector 126um Blue Boots for 3mm DUPLEX
LCA09DX2	LC/APC SM Connector 2mm Green DUPLEX
LCA09DX3	LC/APC SM Connector 3mm Green DUPLEX

# CONNECTORS *Multimode*



## GENERAL

Our connectors are suitable for OM1, OM2, OM3, OM4, OS1 and OS2 and G657-A1 and A2 pig tails and patch cords, available in UPC and APC for single mode with a variety of colour and type of boots and cable diameter 900um, 2mm and 3mm for both single and multimode fibre. Manufactured including Standard, Premium Low Loss and High Performance Grades, which are suitable for various applications.



## FEATURES

### SC CONNECTOR:

- 2.5mm Zirconia Ceramic ferrule
- Push/pull fast connection mechanism
- UPC single mode with blue boots and housing
- APC single mode with green boots and housing - pre angled ferrule for 8 degree polishing
- Multimode with red or black boots and beige housing
- Complies with IEC 61754-4 and TIA 604-3-B, FOCIS-3
- Low insertion loss and back reflection capability
- Zirconia ceramic ferrule available in several performance grades
- RoHS materials, REACH SvHC compliant
- Each connector is packed individually and delivered in bulk package

### LC CONNECTOR:

- 1.25mm Zirconia Ceramic ferrule in a small form factor (SFF) fibre optic
- Snag free latch connection housing with an audible click
- UPC single mode with white or blue boots
- APC single mode with green boots
- Multimode with white, red or black boots available
- Complies with IEC 61754-20 and TIA 604-10-B, FOCIS-10 for intermateability
- Low insertion loss and back reflection capability
- Zirconia ceramic ferrule available in several performance grades
- RoHS materials, REACH SvHC compliant
- Each connector is packed individually and delivered in bulk package

### ST CONNECTORS

- 2.5 mm ferrule
- Quick release bayonet mechanism for ease of use.
- Low Loss and High Performance Grades suitable for various applications.
- Single mode with yellow boots
- Multimode with black or red boots
- Complies with IEC 61754-2 and TIA 604-2-B, FOCIS-2
- Nickel plated metal body
- Zirconia ceramic ferrule available in several performance grades
- RoHS materials, REACH SvHC compliant
- Each connector is packed individually and delivered in bulk package

### FC CONNECTORS

- 2.5 mm ferrule
- Threaded metal coupling nut for a secure connection
- UPC Single mode with blue boots
- APC with green boots
- Multimode with black boots
- Complies with IEC 61754-13 and TIA 604-4-B, FOCIS-4 for intermateability
- Low insertion loss and back reflection capability
- Precision anti rotation key for mechanical stability
- Nickel plated metal body corrosion resistant
- Zirconia ceramic ferrule available in several performance grades
- RoHS materials, REACH SvHC compliant
- Each connector is packed individually and delivered in bulk package





P/N	DESCRIPTION
FC MULTIMODE	
FCMMSX3	FC/PC MM Connector 3mm Black Boot Ribbed Bellcore SIMPLEX
FCMMSX3	FC/PC MM Connector 2mm Black Bellcore Boot SIMPLEX
SC MULTIMODE	
SCMMSX3	SC MM Connector 3mm Bellcore Boot - SIMPLEX
SCMMSX9	SC MM Beige Connector 900Qm SIMPLEX
SCMMSX2	SC MM Connector 2mm Bellcore Boot - Colour Beige SIMPLEX
SCMMDX3	SC MM Beige Connector 3mm Bellcore Red Boot & Black Boot DUPLEX
SCMMDX9	SC MM Beige Connector 900Qm DUPLEX
SCMMDX2	SC MM Beige Connector 2mm Boot Bellcore Red Boot & Black Boot incl clips DUPLEX
ST MULTIMODE	
STMMSBX3	ST MM Connector 3mm Black Ribbed Boot SIMPLEX
STMMRBX3	ST MM Connector 3mm Red Ribbed Boot SIMPLEX
STMMSBX2	ST MM Connector 2mm Black Ribbed Boot SIMPLEX
STMMRBX2	ST MM Connector 2mm Red Ribbed Boot SIMPLEX
LC MULTIMODE	
LCMMSX2	LC MM Connector One - Piece type for 2mm cable SIMPLEX
LCMMSXB3	LC MM Connector 3mm Black Boot - 127um SIMPLEX
LCMMSXR3	LC MM Connector 3mm RED Boot - 127um SIMPLEX
LCMMSX9	LC MM 900Qm White Boot SIMPLEX
LCMMDX2	LC MM 2mm cable Beige DUPLEX
LCMMDX3	LC MM Beige Connector 3mm Bellcore Red Boot & Black Boot DUPLEX
LCMMDX9	LC MM 900Qm White Boot DUPLEX



# FAST CONNECTORS



## GENERAL

Available in LC and SC UPC/APC and ST UPC these field installable connectors offer a fast and reliable connection which can easily be achieved in a very short time as they are already factory polished and require no epoxy or crimping and they are ideal for FTTH application.



## FEATURES

- Window feature allows testing with a visual fault locator
- Mechanical splice incorporated
- Available in single mode and multimode
- Excellent optical performance
- Compatible with standard adaptors
- Template for cable and buffer stripping included in the packaging
- Suitable in environments where fusion-splicing termination is not advisable

### Standards

- Complies with IEC, EIA/TIA or Telcordia standards
- Conforms to IEC 61300-2-2, 61300 2-4



## SPECIFICATIONS

- Insertion Loss  $\leq 0.5\text{dB}$  conforms to IEC 61300-2-2
- Insertion Loss typical  $\leq 0.3\text{dB}$  conforms to IEC 61300-2-4
- Return Loss 50db/55dB conforms to IEC 61300-2-5
- Available UPC and APC
- FTTH end user termination
- Hazardous environment termination where fusion splicing is prohibited
- Fibre Type Single mode and Multimode
- Insertion Loss (Max)\* 0.5dB
- Insertion Loss (Typical)\* 0.3dB
- Return Loss (Typical)\* 50db/55dB
- Polishing Type UPC and APC



## PACKAGING

- Sealed plastic bag with individual test certificate as standard.
- Zip lock bags and blister packaging also available.







P/N	DESCRIPTION
CONNECTORS FAST	
SCA300F	SC-APC-OS1/OS2-3MM-GREEN BODY-FIC
SCA009F	SC-APC-OS1/OS2-900UM-GREEN BODY-FIC
SCP300F	SC-PC-OS1/OS2-3MM-BLUE BODY-FIC
SCP009F	SC-PC-OS1/OS2-900UM-BLUE BODY-FIC
LCA200F	LC-APC-OS1/OS2-2MM-GREEN BODY-FIC
LCA009F	LC-APC-OS1/OS2-900UM-GREEN BODY-FIC
LCP200F	LC-PC-OS1/OS2-2MM-BLUE BODY-FIC
LCP009F	LC-PC-OS1/OS2-900UM-BLUE BODY-FIC
SCP62300F	SC-PC-OM1-3MM-BEIGE BODY-FIC
SCP62009F	SC-PC-OM1-900UM-BEIGE-BODY-FIC
SCP50300F	SC-PC-OM2-3MM-BEIGE-BODY-FIC
SCP50009F	SC-PC-OM2-900UM-BEIGE-BODY-FIC
SCPOM3300F	SC-PC-OM3-3MM-BEIGE BODY-FIC
SCPOM3009F	SC-PC-OM3-0.9MM-BEIGE BODY-FIC
LCP62200F	LC-PC-OM1-2MM-BEIGE-BODY-FIC
LCP62009F	LC-PC-OM1-900UM-BEIGE-BODY-FIC
LCP50200F	LC-PC-OM2-2MM-BEIGE-BODY-FIC
LCP50009F	LC-PC-OM2-900UM-BEIGE-BODY-FIC
LCPOM3200F	LC-PC-OM3-2MM-BEIGE BODY-FIC
LCPOM3009F	LC-PC-OM3-0.9MM-BEIGE BODY-FIC
STP62009F	ST-PC-OM1-900UM-BEIGE-BODY-FIC
STP50009F	ST-PC-OM2-900UM-BEIGE-BODY-FIC
STPOM3009F	ST-PC-OM3-900UM-BEIGE BODY-FIC

# ADAPTORS

## Singlemode



### GENERAL

Our single mode adaptors are available with a ceramic sleeve which offer a high precision alignment for reliability and optimal connectivity and reconnection.

**Types available :**

- FC - UPC and APC with a Double D or a Square footprint
- SC - UPC and APC flange or flangeless with metal clips or inbuilt clips, simplex and duplex
- LC - UPC and APC flange or flangeless with metal clips or inbuilt clips, simplex, duplex and quads
- ST available simplex with a Double D footprint.
- R&M and H&S E2000 UPC and APC with simplex SC footprint.



### SPECIFICATION

- Mating durability - IEC 61300-2-2
- Insertion loss IEC 61300 - 3-4 <0.1dB
- Operating temperature IEC 61300 -2-22 -25C +70 C



### STANDARDS

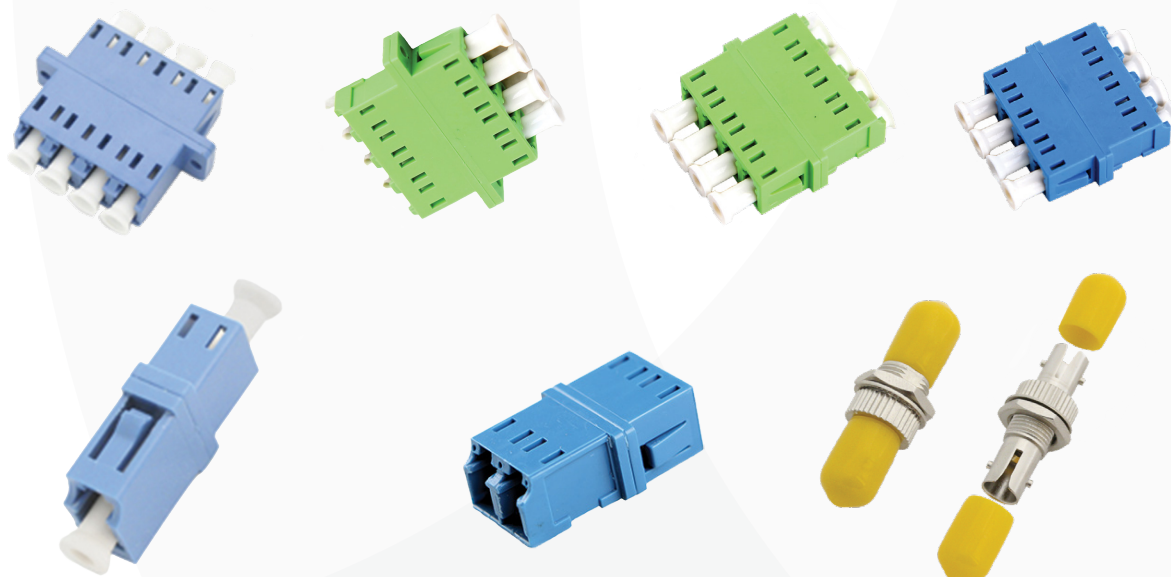
- Complies with IEC 61754-2
- REACH SvHC compliant
- Materials compliant to RoHS2



### PACKAGING

- Blister pack 25 adaptors and 50 available.
- Bespoke packaging available on request.





P/N	DESCRIPTION
<b>FC SINGLEMODE</b>	
FCPDD09	Adaptor FC SM Uniter Small 11mm with Double D footprint Ceramic Sleeve - 2.06 KeyWay Clear Dust Caps
FCADD09	Adaptor FC SM APC Uniter Small 11mm with Double D Footprint Ceramic Sleeve - 2.06 KeyWay Green Caps
FCPSQ09	Adaptor FC SMUniter 'Square' Ceramic Sleeve 2.06mm Key-Way Clear Dust Cap
FCASQ09	Adaptor FC SM APC-ZR-Square-STD-Green Cap
<b>SC SINGLEMODE</b>	
SCPSFL09	Adaptor SC SM Blue-ZR-Simplex-Metal Clip-Flange-STD
SCPSWF09	Adaptor SC SM Blue Simplex Uniter Without Flange - Ceramic Sleeve
SCPDFL09	Adaptor SC SM Blue-ZR-DX-Metal Clip-Flange-STD
SCPDWF09	Adaptor SC SM Duplex Uniter Without Flange - Ceramic Sleeve - Blue
SCASFL09	Adaptor SC APC SM Green-ZR-SX-Metal Clip-Flange-STD
SCASWF09	SC/APC Simplex SM Uniter Without Flange - Ceramic Sleeve - GREEN
SCADFL09	Adaptor SC APC SM Green-ZR-DX-Metal Clip-Flange-STD
SCADWF09	SC/APC Duplex SM Uniter - GREEN Without Flange - Ceramic Sleeve
<b>ST SINGLEMODE</b>	
STP09	Adaptor ST SM Yellow Cap-STD
<b>LC SINGLEMODE</b>	
LCPDFL09	Adaptor LC SM DUPLEX Blue-ZR-DX-Metal Clip-Flange-STD
LCPDWF09	Adaptor LC SM UPLEX BLUE S'Mode SC Simplex FootPrint - Without Flange
LCPQFL09	Adaptor LC SM Blue-ZR-QUAD-Metal Clip-Flange-STD
LCAQFL09	Adaptor LC SM QUAD (x4) BLUE (SC Dplx FootPrint) METAL CLIP Without Flange
LCAQFL09	Adaptor LC/APC SM QUAD GREEN (SC Dplx FootPrint) Metal Clip with Flange
LCADFL09	Adaptor LC APC SM Green-ZR-DUPLEX -Metal Clip-Flange-STD
LCADWF09	Adaptor LC APC SM Green-ZR-DUPLEX- Metal Clip-Without Flange
LCPSWF09	Adaptor LC SM Simplex 999-111 - Ceramic Sleeve Without Flange
<b>E2000 SINGLEMODE</b>	
E2PFL09	Adaptor E2000 SM R&M BLUE with 2-Hole Flange R504511 - Simplex SC Foot-Print



# ADAPTORS *Multimode*



## GENERAL

Our multi mode adaptors are available with a phosphorous bronze sleeve which offer a high precision alignment for reliability and optimal connectivity and reconnection.

### **Types available :**

- FC - UPC and APC with a Double D or a Square footprint
- SC - UPC and APC flange or flangeless with metal clips or inbuilt clips, simplex and duplex
- LC - UPC and APC flange or flangeless with metal clips or inbuilt clips, simplex, duplex and quads
- ST available simplex with a Double D footprint.
- R&M and H&S E2000 UPC and APC with simplex SC footprint.



## SPECIFICATION

- Mating durability - IEC 61300-2-2
- Insertion loss IEC 61300 - 3-4 <0.1dB
- Operating temperature IEC 61300 -2-22 -25C +70 C



## STANDARDS

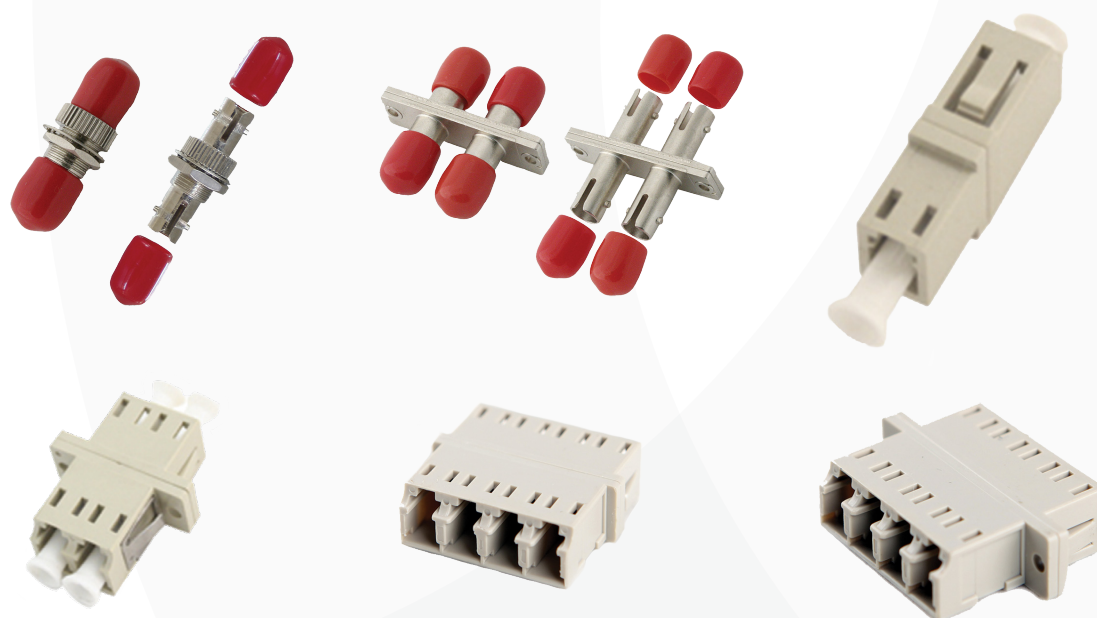
- Complies with IEC 61754-2
- REACH SvHC compliant
- Materials compliant to RoHS2



## PACKAGING

- Blister pack 25 adaptors and 50 available.
- Bespoke packaging available on request.





P/N	DESCRIPTION
FC MULTIMODE	
FCPKMM	Adaptor FC MM 'Square' Phosphor Bronze Sleeve 2.2mm Key-Way
FCPDMM	Adaptor FC MM Uniter Small 11mm with Double D Footprint - Phosphor Bronze - 2.06 KeyWay White Dust Caps
SC MULTIMODE	
SCPSFLMM	Adaptor SC MM Simplex Beige-PB-SX-Metal Clip-Flange-STD-Tray
SCPSWFMM	Adaptor SC MM Simplex Uniter Without Flange - Phosphor Bronze - BEIGE
SCPDFLMM	Adaptor SC MM Duplex Beige-PB-DX-Metal Clip-Flange-STD
ST MULTIMODE	
STPMM	Adaptor ST MM red Cap-STD
LC MULTIMODE	
LCPDFLMM	Adaptor LC MM Duplex Beige-ZR-DX-Metal Clip-Flange-STD
LCPSWFMM	Adapter LC MM Duplex Beige (SC Simplex FootPrint) 'Without Flange'
LCPDFLACQ	Adapter LC MM Duplex - ZIRCONIA SLEEVE - AQUA (SC Simplex FootPrint) With Flange
LCPDWFACQ	Adapter LC MM Duplex AQUA ZIRCONIA (SC FootPrint) 'Without Flange'
LCPDFLERK	Adapter LC MM Duplex - ZIRCONIA SLEEVE - Erika Violet SC Simplex FootPrint With Flange
LCPDWFERK	Adapter LC MM Duplex Erika Violet ZIRCONIA SC FootPrint 'Without Flange'
LCPQFLERL	Adapter LC MM QUADPLEX (x4) - ZIRCONIA SLEEVE - AQUA (SC Dplx FootPrint) METAL CLIP with Flange.
LCPQWFACQ	Adaptor LC MM QUADPLEX Flangeless with Zirconia Sleeves - Aqua
LCPQFLMM	Adapter LC MM QUADPLEX (x4) BEIGE (SC Dplx FootPrint) METAL CLIP with Flange
LCPQFLMM	Adapter LC/PC MM QUADPLEX BEIGE MM WITHOUT MOUNTING FLANGE
E2000 MULTIMODE	
E2PFLMM	Adaptor E2000 MM R&M Beige with 2-Hole Flange R505522 Simplex SC Foot-Print

## PATCH CORD SIMPLEX *Standard* line



### GENERAL

We produce a vast range of simplex fibre optic patch cords in [OS1/2 9/125](#) - [OM1 62.5/125](#) - [OM2 50/125](#) - [OM3 50/125](#) and [OM4 50/125](#) with a Fast Line facility for quick delivery. Various lengths and connector types are available to meet individual requirements.



### FEATURES

- SC, LC and ST connectors as standard. Other connectors available.
- UPC polished connectors.
- APC polished available for singlemode.
- 2mm LSZH (low smoke zero halogen) tight buffer cable as standard, 3mm available on request.
- Armoured also available.
- Short boot also available.
- Each patch cord is tested and supplied with a full test certificate.

#### **Standard colours:**

- OS2 yellow
- OM1 and OM2 orange
- OM3 Aqua - OM4 Erika Violet or Aqua or request
- Other colours available upon request.



### STANDARD

- Our fibre conforms to or exceeds all relevant ISO/IEC, TIA/EIA and ITU standards.



### PACKAGING

- Sealed plastic bag with individual test certificate as standard.
- Zip lock bags and blister packaging also available.







## PART NUMBER GENERATOR

Standard	Connector A	Connector B	Type of fibre	Simplex SX	Length
D	SC	SC	OM1	SX	0.5
D	SCA	SCA	OM2	SX	1
D	LC	LC	OM3	SX	2
D	LCA	LCA	OM4	SX	3
D	ST	ST	OS2	SX	5
D	FC	FC	-	-	XX

Example part number

D	SC	SC	OS2	SX	5
---	----	----	-----	----	---

Description :

Patch cord simplex standard line 2mm cable SC-SC single mode (SM) yellow 5 metres length.

## PATCH CORD DUPLEX *Standard* line



### GENERAL

We produce a vast range of duplex fibre optic patch cords in OS1/2 9/125 -OM1 62.5/125-OM2 50/125-OM3 50/125 and OM4 50/125 with a Fast Line facility for quick delivery.

Various lengths and connector types are available to meet individual requirements.



### FEATURES

- SC, LC and ST connectors as standard. Other connectors available.
- UPC polished connectors.
- APC polished available for singlemode.
- 2mm LSZH (low smoke zero halogen) tight buffer cable as standard, 3mm available on request.
- Armoured also available.
- Short boot also available.
- Each patch cord is tested and supplied with a full test certificate.

#### **Standard colours:**

- OS2 yellow
- OM1 and OM2 orange
- OM3 Aqua - OM4 Erika Violet or Aqua or request
- Other colours available upon request.



### STANDARD

- Our fibre conforms to or exceeds all relevant ISO/IEC, TIA/EIA and ITU standards.



### PACKAGING

- Sealed plastic bag with individual test certificate as standard.
- Zip lock bags and blister packaging also available.





## PART NUMBER GENERATOR

Standard	Connector A	Connector B	Type of fibre	Duplex DX	Length
D	SC	SC	OM1	DX	0.5
D	SCA	SCA	OM2	DX	1
D	LC	LC	OM3	DX	2
D	LCA	LCA	OM4	DX	3
D	ST	ST	OS2	DX	5
D	FC	FC	-	-	10
-	-	-	-	-	15
-	-	-	-	-	20
-	-	-	-	-	30

Example part number

D	SC	SC	OS2	DX	5
---	----	----	-----	----	---

Description :

Patch cord duplex standard line 2mm cable SC-SC single mode (SM) yellow 5 metres length.

# PIGTAIL

# Standard Line



## GENERAL

In addition to our supreme line we can also supply a standard line range of pigtails which are cost effective and suitable for most applications.

The 900 um buffered fibre insures easy handling in panels, wall boxes and splice cassettes. Our standard line pigtails, single and multimode, are terminated with our optimised range of zirconia ceramic ferrule connectors, our polishing techniques and precision factory assembly guarantees high transmission quality and reliability. We also have a range of easy strip pigtails facilitating on-site installation.



## FEATURE AND BENEFITS

- Exceed IEC performance requirements
- Easy to strip pigtails for on site installation
- Available in different fibre types (SM - G.652D, MM - OM1, OM2, OM3, OM4)
- Available with different connector types (LC, FC, SC, ST)
- Multipacks of 12 tight buffer pigtails (SM, OM1 and OM2 - white, OM3 - aqua, OM4 - Erica violet)
- Pack of 12 x colour easy strip pigtails as per IEC 60304
- Standard buffer low smoke zero halogen (LSZH) material with 900 micron diameter
- REACH & SvHC compliant
- Materials compliant to RoHS (2011/65/EU)



## APPLICATIONS

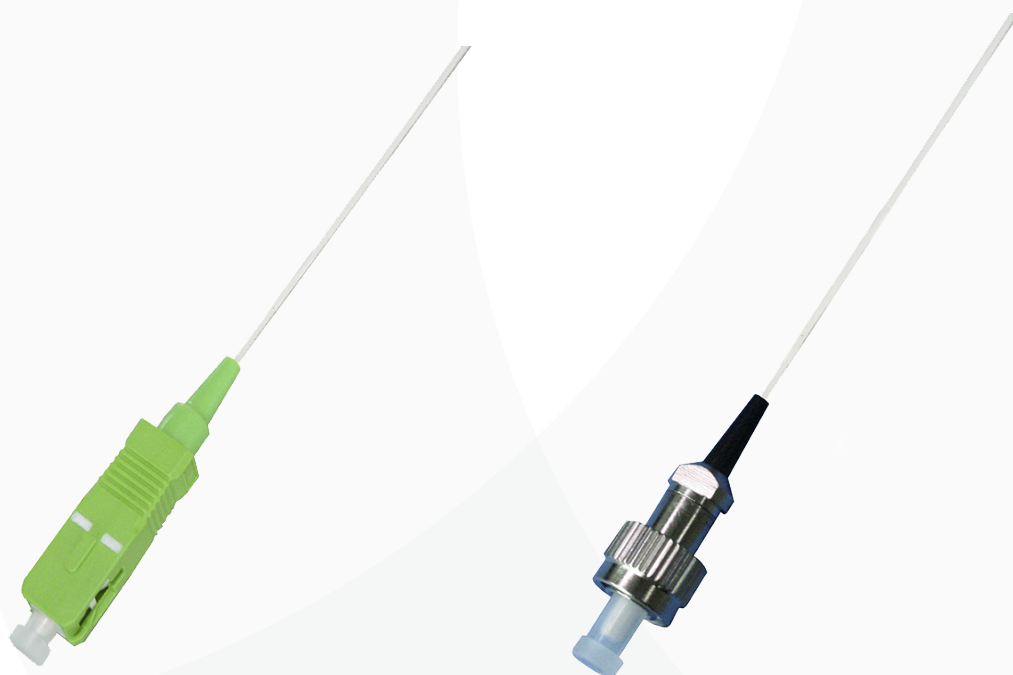
- Patch panels, wall boxes, ODFs and splice cassettes
- Enterprise
- Datacom
- LAN and WAN
- FTTX
- Broadband network



## PACKAGING

- Sealed bags with individual test certificate.
- Zip lock or blister pack also available.





P/N	DESCRIPTION
<b>OS2 SIMPLEX STANDARD</b>	
DE2AOS2T1	E2A STANDARD Simplex SM 900um LSZH TB
DFCAOS2T1	FCA STANDARD Simplex SM 900um LSZH TB
DLCAOS2T1	LCA STANDARD Simplex SM 900um LSZH TB
DSCAOS2T1	SCA STANDARD Simplex SM 900um LSZH TB
DFCOS2T1	FC STANDARD Simplex SM 900um LSZH TB
DLCOS2T1	LC STANDARD Simplex SM 900um LSZH TB
DSCOS2T1	SC STANDARD Simplex SM 900um LSZH TB
DSTOS2T1	ST STANDARD Simplex SM 900um LSZH TB
<b>OM1 SIMPLEX STANDARD</b>	
DE2OM1T1	E2 STANDARD Simplex OM1 900um LSZH TB
DFCOM1T1	FC STANDARD Simplex OM1 900um LSZH TB
DLCOM1T1	LC STANDARD Simplex OM1 900um LSZH TB
DSCOM1T1	SC STANDARD Simplex OM1 900um LSZH TB
DSTOM1T1	ST STANDARD Simplex OM1 900um LSZH TB
<b>OM2 SIMPLEX STANDARD</b>	
DE2OM2T1	E2 STANDARD Simplex OM2 900um LSZH TB
DFCOM2T1	FC STANDARD Simplex OM2 900um LSZH TB
DLCOM2T1	LC STANDARD Simplex OM2 900um LSZH TB
DSCOM2T1	SC STANDARD Simplex OM2 900um LSZH TB
DSTOM2T1	ST STANDARD Simplex OM2 900um LSZH TB
<b>OM3 SIMPLEX STANDARD</b>	
DE2OM3T1	E2 STANDARD Simplex OM3 900um LSZH TB
DFCOM3T1	FC STANDARD Simplex OM3 900um LSZH TB
DLCOM3T1	LC STANDARD Simplex OM3 900um LSZH TB
DSCOM3T1	SC STANDARD Simplex OM3 900um LSZH TB
DSTOM3T1	ST STANDARD Simplex OM3 900um LSZH TB
<b>OM4 SIMPLEX STANDARD</b>	
DE2OM4T1	E2 STANDARD Simplex OM4 900um LSZH TB
DFCOM4T1	FC STANDARD Simplex OM4 900um LSZH TB
DLCOM4T1	LC STANDARD Simplex OM4 900um LSZH TB
DSCOM4T1	SC STANDARD Simplex OM4 900um LSZH TB
DSTOM4T1	ST STANDARD Simplex OM4 900um LSZH TB
DSTSTOM4SY1	STANDARD OM4 ST - ST Simplex 50/125 3mm LSZH Aqua

# FLEXY OPT PATCH PANEL *SC Simplex - LC Duplex*



## GENERAL

This innovative panel has been especially designed to offer complete flexibility whether you need to accommodate 24 SC simplex and LC duplex and quads adaptors or ST and FC adaptors by removing the front panel, all housed in 1U space offering the end user easy access for installation and reworking without causing too much disturbance to the existing cables. Suitable for a variety of cables: tight buffer, loose tube, pre terminated assemblies and steel tape armoured. It has 4 entry cable points allowing greater flexibility during installation. A splice cassette for 24 fibres is available to suit this panel. The panel can be supplied already loaded with your choice of adaptors, a splice cassette or empty.



## FEATURES

- Removable front panel with labels
- 24 adaptors position
- Suitable for a variety of adaptors and cable type
- RoHS, REACH SvHC and UL rated
- Fits standard 19"



## APPLICATIONS

- Indoor applications
- Data communications
- Data centres
- Telecommunication networks
- Premise installations



## STANDARDS

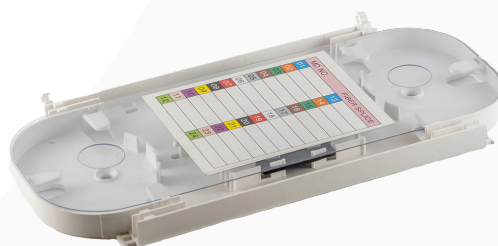
- Material: cold rolled steel
- 1.2 mm thickness
- IP20
- Colour Black RAL 9004
- Operating temperature -40C - +50C
- Designed in accordance with TIA/EIA 568.C, ISO/IEC 11801, EN50173, IEC60304, IEC61754



## PACKAGING

- Net weight 2.5 kg
- Packaged weight 3kg
- Anonymous brown box 530mmX55mmx260mm
- Designed in accordance





P/N	DESCRIPTION
SF01XXX00	Flexy Panel Empty version For SC simplex and LC duplex
SC SIMPLEX SINGLE MODE FOOT PRINT FLANGELESS	
SF01SCS12	Flexy Panel with 12 SC Simplex adaptors SM Blue and 12 hole cover
SF01SCS24	Flexy Panel with 24 SC Simplex adaptors SM Blue
SF01SCSA12	Flexy Panel with 12 SC Simplex adaptors SM APC Green and 12 hole cover
SF01SCSA24	Flexy Panel with 24 SC Simplex adaptors SM APC Green
SC SIMPLEX MULTI MODE FOOT PRINT FLANGELESS	
SF01SCM12	Flexy Panel with 12 SC Simplex adaptors MM Beige and 12 hole cover
SF01SCM24	Flexy Panel with 24 SC Simplex adaptors MM Beige
SF01SCMA12	Flexy Panel with 12 SC Simplex adaptors MM Aqua and 12 hole cover
SF01SCMA24	Flexy Panel with 24 SC Simplex adaptors MM Aqua
SF01SCME12	Flexy Panel with 12 SC Simplex adaptors MM Erika and 12 hole cover
SF01SCME24	Flexy Panel with 24 SC Simplex adaptors MM Erica
SPC24	Splice cassette for 24 fibers



# FLEXY OPT PATCH PANEL



P/N	DESCRIPTION
LC DUPLEX SINGLE MODE FOOT PRINT FLANGELESS	
SF01LCS12	Flexy Panel with 12 LC Duplex adaptors SM Blue and 12 hole cover
SF01LCS24	Flexy Panel with 24 LC Duplex adaptors SM Blue
SF01LCSA12	Flexy Panel with 12 LC Duplex adaptors SM APC Green and 12 hole cover
SF01LCSA24	Flexy Panel with 24 LC Duplex adaptors SM APC Green
LC DUPLEX MULTI MODE FOOT PRINT FLANGELESS	
SF01LCM12	Flexy Panel with 12 LC Duplex adaptors MM Beige and 12 hole cover
SF01LCM24	Flexy Panel with 24 LC Duplex adaptors MM Beige
SF01LCMA12	Flexy Panel with 12 LC Duplex adaptors MM Aqua and 12 hole cover
SF01LCMA24	Flexy Panel with 24 LC Duplex adaptors MM Aqua
SF01LCME12	Flexy Panel with 12 LC Duplex adaptors MM Erika and 12 hole cover
SF01LCME24	Flexy Panel with 24 LC Duplex adaptors MM Erica
KITMAN	
SCBLS	Sc Simplex LC Duplex Hole cover
SPC12	Splice cassette for 12 fibers
SPC24	Splice cassette for 24 fibers

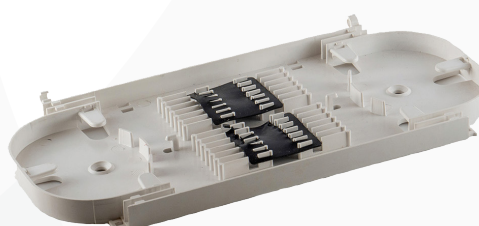
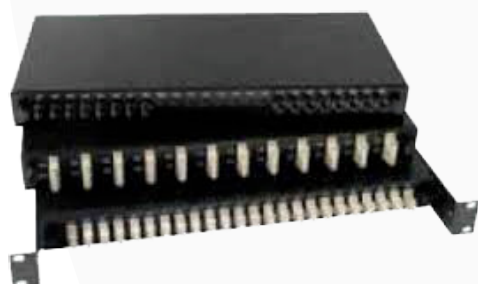


P/N	DESCRIPTION
SF02XXX00	Flexy Panel Empty version For SC Duplex and LC Quad 300 mixed
SC DUPLEX SINGLE MODE FOOT PRINT FLANGELESS	
SF02SCS12	Flexy Panel with 12 SC Duplex adaptors SM Blue and 12 hole cover
SF02SCS24	Flexy Panel with 24 SC Duplex adaptors SM Blue
SF02SCSA12	Flexy Panel with 12 SC Duplex adaptors SM APC Green and 12 hole cover
SF02SCSA24	Flexy Panel with 24 SC Duplex adaptors SM APC Green
SC DUPLEX MULTI MODE FOOT PRINT FLANGELESS	
SF02SCM12	Flexy Panel with 12 SC Duplex adaptors MM Beige and 12 hole cover
SF02SCM24	Flexy Panel with 24 SC Duplex adaptors MM Beige
SF02SCMA12	Flexy Panel with 12 SC Duplex adaptors MM Aqua and 12 hole cover
SF02SCMA24	Flexy Panel with 24 SC Duplex adaptors MM Aqua
SF02SCME12	Flexy Panel with 12 SC Duplex adaptors MM Erika and 12 hole cover
SF02SCME24	Flexy Panel with 24 SC Duplex adaptors MM Erika

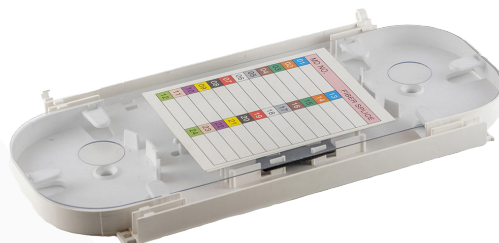
# OPT PATCH PANEL



P/N	DESCRIPTION
LC QUAD SINGLE MODE FOOT PRINT FLANGELESS	
SF02LCS12	Flexy Panel with 12 LC Quad adaptors SM Blue and 12 hole cover
SF02LCS24	Flexy Panel with 24 LC Quad adaptors SM Blue
SF02LCSA12	Flexy Panel with 12 LC Quad adaptors SM APC Green and 12 hole cover
SF02LCSA24	Flexy Panel with 24 LC Quad adaptors SM APC Green
LC QUAD MULTI MODE FOOT PRINT FLANGELESS	
SF02LCM12	Flexy Panel with 12 LC Quad adaptors MM Beige and 12 hole cover
SF02LCM24	Flexy Panel with 24 LC Quad adaptors MM Beige
SF02LCMA12	Flexy Panel with 12 LC Quad adaptors MM Aqua and 12 hole cover
SF02LCMA24	Flexy Panel with 24 LC Quad adaptors MM Aqua
SF02LCME12	Flexy Panel with 12 LC Quad adaptors MM Erika and 12 hole cover
SF02LCME24	Flexy Panel with 24 LC Quad adaptors MM Erica
KITMAN	
SCBLD	Sc Duplex LC Quad Hole cover
SPC12	Splice cassette for 12 fibers
SPC24	Splice cassette for 24 fibers



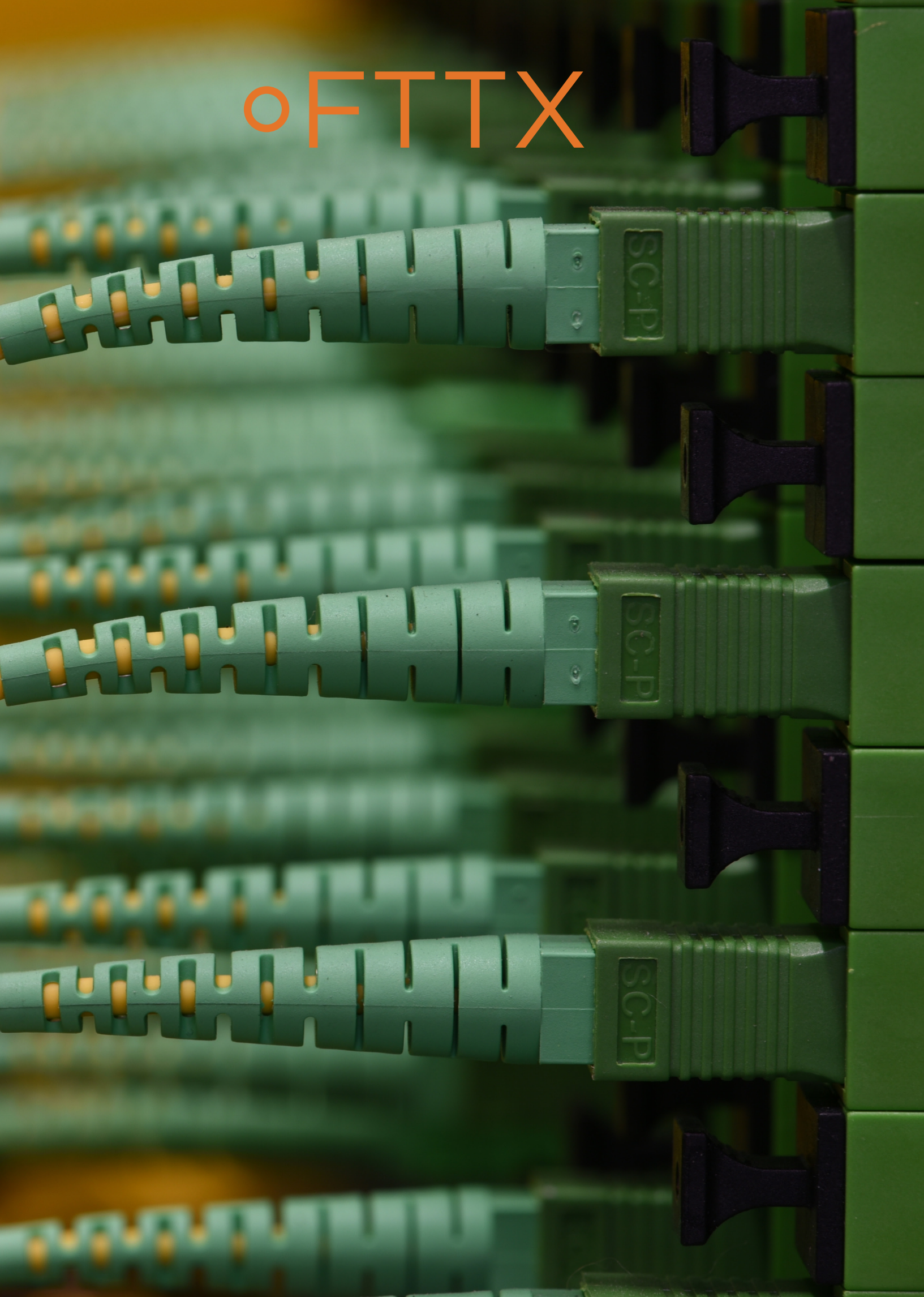
P/N	DESCRIPTION
SF03XXX00	Flexy Panel Empty version For ST Simplex and LC Simplex 300 mixed
ST SIMPLEX SINGLE MODE FOOT PRINT	
SF03STS12	Flexy Panel with 12 ST Simplex adaptors SM Yellow and 12 hole cover
SF03STS24	Flexy Panel with 24 ST Simplex adaptors SM Yellow
ST SIMPLEX MULTI MODE FOOT PRINT	
SF03STM12	Flexy Panel with 12 ST Simplex adaptors MM Red and 12 hole cover
SF03STM24	Flexy Panel with 24 ST Simplex adaptors MM Red
FC SIMPLEX SINGLE MODE FOOT PRINT	
SF03FCS12	Flexy Panel with 12 FC Simplex adaptors SM Black and 12 hole cover
SF03FCS24	Flexy Panel with 24 FC Simplex adaptors SM Black
SF03FCSA12	Flexy Panel with 12 FC Simplex adaptors SM APC Green and 12 hole cover
SF03FCSA24	Flexy Panel with 24 FC Simplex adaptors SM APC Green
FC SIMPLEX MULTI MODE FOOT PRINT	
SF03FCM12	Flexy Panel with 12 FC Simplex adaptors MM Clear and 12 hole cover
SF03FCM24	Flexy Panel with 24 FC Simplex adaptors MM Clear
KITMAN	
STBLD	ST Simplex LC Quad Hole cover
SPC12	Splice cassette for 12 fibers
SPC24	Splice cassette for 24 fibers



P/N	DESCRIPTION
PATCH PANEL FLEXY	
SF24XXX00	Flexy Empty version
SF24LCM24	Flexy sliding patch panel 24 LC Multi mode
SF24LCS24	Flexy sliding patch panel 24 LC Single mode
SF24SCM24	Flexy sliding patch panel 24 SC Multi mode
SF24SCS24	Flexy sliding patch panel 24 SC Single mode
SF24FCM24	Flexy sliding patch panel 24 FC Multi mode
SF24FCS24	Flexy sliding patch panel 24 FC Single mode
SF24STM24	Flexy sliding patch panel 24 ST Multi mode
SF24STS24	Flexy sliding patch panel 24 ST Single mode
SF24LCA24	Flexy sliding patch panel 24 LC Single mode APC
SF24SCA24	Flexy sliding patch panel 24 SC Single mode APC
SF24EDS24	Flexy sliding patch panel 24 E2000 Single mode
SF24EDA24	Flexy sliding patch panel 24 E2000 Single mode APC
KITMAN	
SPC12	Splice cassette for 12 fibers
SPC24	Splice cassette for 24 fibers



○FTTX





# FTTH PRETERM



## GENERAL

AFSON FTTH ready to use preterminated cable is equipped with an unwinding system that prevents torsion of the cable and facilitates the passage inside pipes also thanks to the reduced diameter of the optical cable. The non-connected side is protected by a heat shrinking sheath and a pulling system to facilitate installation. The containment box, small in size, is convenient for both storage and transportation.

Available in 2 to 24 fibres OS2 G657-A1 and G657-A2 with LSZH jacket complete with SC/APC connectors, our preterminated cable is designed to connect FFTH distributions boxes. We have lengths available that can accommodate specific requests. UPC connectors are also available.



## FEATURES

- SC/APC factory pre-installed connectors
- Internal cable 4 to 12 fibre 9/125 G.657.A2 - LSZH jacket



## STANDARD

- IEC 60794-1-2 IEC 60754-1/2 IEC 61034-1/2 IEC 60332-1-2

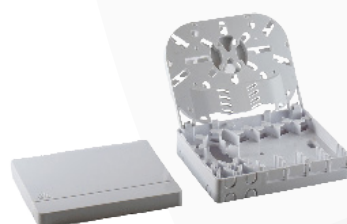


## PACKAGING

- Unwinding system inside compact cardboard box







P/N	DESCRIPTION
FTTH PRETERMINATED WHITE CABLE LSZH	
PRE04A2SCABOX-XX	G657A.2 Microtube LSZH jacket white 3.5 mm cable 4 Fibers Preterminated one side staggered SCAPC with pulling element and one side with OPW0004SCAPIG XX mt
PRE04A2SCA-XX	G657A.2 Microtube LSZH jacket white 3.5 mm cable 4 Fibers Preterminated one side staggered SCAPC with pulling element and one side open with protection XX mt
PRE08A2SCASCA-XX	G657A.2 Microtube LSZH jacket white 3.5 mm cable 8 Fibers Preterminated one side staggered SCAPC with pulling element and one side staggered SCAPC protected XX mt
PRE08A2SCA-XX	G657A.2 Microtube LSZH jacket white 3.5 mm cable 8 Fibers Preterminated one side staggered SCAPC with pulling element and one side open with protection XX mt
FTTH PRETERMINATED BLACK CABLE PE	
PRE04A2SCAPEBOX-XX	G657A.2 Microtube PE jacket Black 3.5 mm cable 4 Fibers Preterminated one side staggered SCAPC with pulling element and one side with OPW0004SCAPIG XX mt
PRE04A2SCAPE-XX	G657A.2 Microtube PE jacket Black 3.5 mm cable 4 Fibers Preterminated one side staggered SCAPC with pulling element and one side open with protection XX mt
PRE08A2SCAPESCA-XX	G657A.2 Microtube LSZH jacket white 3.5 mm cable 8 Fibers Preterminated one side staggered SCAPC with pulling element and one side staggered SCAPC protected XX mt
PRE08A2SCA-XX	G657A.2 Microtube LSZH jacket white 3.5 mm cable 8 Fibers Preterminated one side staggered SCAPC with pulling element and one side open with protection XX mt



# WALL BOXES



## GENERAL

Our Lockable wall mount optical distribution boxes offer protection from the elements with an IP rating of 65 and a strong and durable ABS construction which makes them applicable for indoor and outdoor use. Suitable for a variety of adaptors with an SC footprint our optical distribution boxes can accommodate from 4 to 48 fibres. They are supplied empty with internal cable management system with bend radius protection. To facilitate installation the front door is removable.



## FEATURES

- Up to 48 fibres
- IP 65
- Sealing glands
- Supplied with wall fixings and tie wraps
- Suitable for loose tube, tight buffer and preterminated assemblies
- Lockable and removable front door
- Multiple adapter options available
- RoHS, REACH SvHC



## APPLICATIONS

- Data centres, premise installations, telecommunication networks
- Ethernet, Fibre Channel, ATM, LAN, MAN and WAN
- Indoor/Outdoor applications



## SPECIFICATION

- Operating -40C to +60C
- Designed in accordance with TIA/EIA 568.C, ISO/IEC 11801, EN50173, IEC60304, IEC61754
- Compliant to RoHS, Reach/SVHC



## PACKAGING

- Brown carton as standard Special
- Packaging upon request.





P/N	DESCRIPTION
WALL BOXES	
OPW0012	Optical distribution Box IP65 Lockable Wall mount up to 12 fibers SC foot print empty
OPW0024	Optical distribution Box IP65 Lockable Wall mount up to 24 fibers SC foot print empty
OPW0048	Optical distribution Box IP65 Lockable Wall mount up to 48 fibers SC foot print empty

## PART NUMBER GENERATOR

Box	Type of fibre	SC Simplex	LC Simplex
OPW0012	OM1	SC	LC
OPW0024	OM2	SC	LC
OPW0048	OM3	SC	LC
-	OM4	SCAPC	LCAPC
-	OM5	-	-
-	SM	-	-

Example part number

OPW0012	SC	SM
---------	----	----

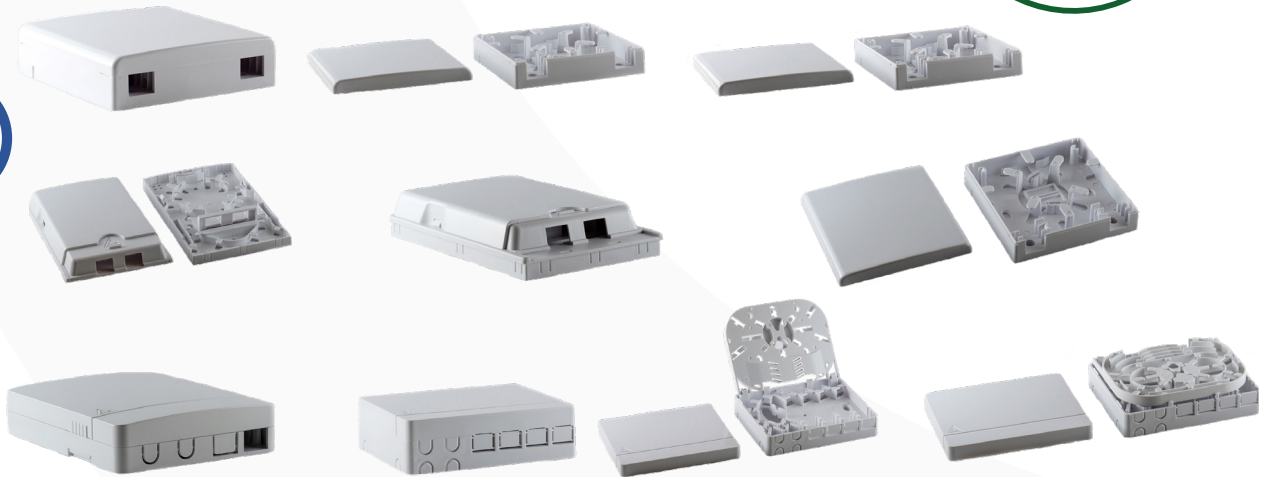
OPW12SCOM1

Description :

Box a parete IP65 12 SC simplex SM. Available including pigtaills up on request.



# WALL BOXES



P/N	DESCRIPTION
WALL BOXES	
OPW0002	Optical distribution Box IP40 Lockable Wall mount up to 2 fibers SC foot print empty
OPW0002S	Optical distribution Box IP40 Lockable Wall mount sliding up to 2 fibers SC foot print empty
OPW0004	Optical distribution Box IP40 Lockable Wall mount up to 4 fibers SC foot print empty

## PART NUMBER GENERATOR

Box	Type of fibre	SC Simplex
OPW002	OM1	SC
OPW002S	OM2	SCAPC
OPW004	OM3	-
-	OM4	-
-	OM5	-
-	SM	-

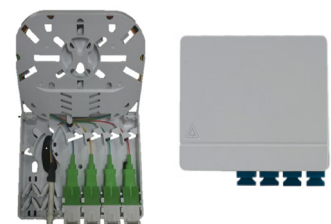
Example part number

OPW004	SCAPCC	SM
--------	--------	----

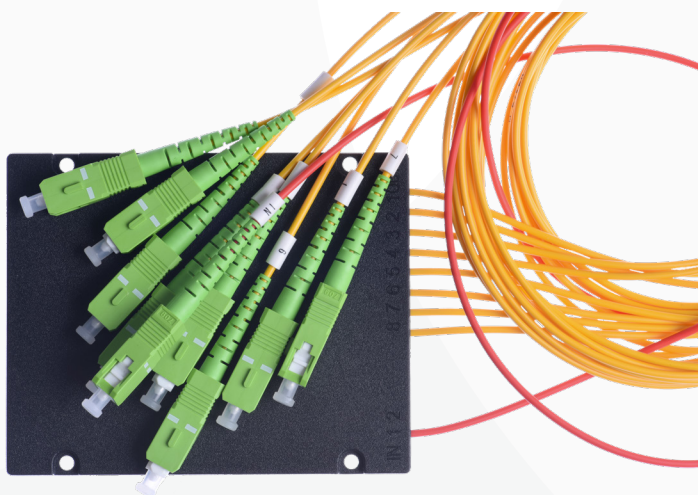
OPW004SCAPCSM

Description :

Box a parete IP40 4 SC APC SM. Available including pigtails up on request.



# SPLITTERS



P/N	DESCRIPTION
SPLITTERS	
PLC102SCAP1	PLC 1:02 Hearted ABS Box SC/APC connectors 2.0mm
PLC104SCAP1	PLC 1:04 Hearted ABS Box SC/APC connectors 2.0mm
PLC108SCAP1	PLC 1:08 Hearted ABS Box SC/APC connectors 2.0mm
PLC116SCAP1	PLC 1:16 Hearted ABS Box SC/APC connectors 2.0mm
PLC132SCAP1	PLC 1:16 Hearted ABS Box SC/APC connectors 2.0mm
PLC164SCAP1	PLC 1:16 Hearted ABS Box SC/APC connectors 2.0mm
PLC102P1	PLC 1:02 Hearted ABS Box no connectors 2.0mm
PLC104P1	PLC 1:04 Hearted ABS Box no connectors 2.0mm
PLC108P1	PLC 1:08 Hearted ABS Box no connectors 2.0mm
PLC116P1	PLC 1:16 Hearted ABS Box no connectors 2.0mm
PLC132P1	PLC 1:16 Hearted ABS Box no connectors 2.0mm
PLC164P1	PLC 1:16 Hearted ABS Box no connectors 2.0mm

# PATCH CORDS FTTH PATCH CORDS



## GENERAL

We produce a vast range of simplex fibre optic patch cords in OS1/2 9/125 G657.A1, G657.A2 with a Fast Line facility for quick delivery. Various lengths and connector types are available to meet individual requirements.



## FEATURES

- SC, LC and ST connectors as standard. Other connectors available.
- UPC polished connectors.
- APC polished available for singlemode.
- 2mm LSZH (low smoke zero halogen) tight buffer cable as standard, 3mm available on request.
- Armoured also available.
- Short boot also available.
- Each patch cord is tested and supplied with a full test certificate.

### **Standard colours:**

- OS1/2 9/125
- G657.A1
- G657.A2
- White colour
- Other colour are available upon request.



## STANDARD

- Our fibre conforms to or exceeds all relevant ISO/IEC, TIA/EIA and ITU standards.



## PACKAGING

- Sealed plastic bag with individual test certificate as standard.
- Zip lock bags and blister packaging also available.







## PART NUMBER GENERATOR

Standard	Connector A	Connector B	OS2	G657.A1	G657.A2	Simplex SX	Length
D	SC	SC	OS2	A1	A2	SX	0.5
D	SCA	SCA	-	-	-	SX	1
DR	-	-	-	-	-	-	2
DR	-	-	-	-	-	-	3
-	-	-	-	-	-	-	5
-	-	-	-	-	-	-	XX

Example part number

D	SC	SC	OS2			SX	5
---	----	----	-----	--	--	----	---

Description :

Patch cord simplex standard line 2mm cable SC-SC single mode (SM) yellow 5 metres length.





[www.afsoncable.com](http://www.afsoncable.com)

[www.afsonuk.com](http://www.afsonuk.com)



HANGZHOU AFSON CABLE & WIRE. CO.LTD  
HANGZHOU AFSON CABLE & WIRE CO.LTD



AFSONUK Ltd  
Cable& wire co.ltd